



# Lessons from New Zealand's Success in Fighting COVID-19





**Please contact relevant public health authorities for medical/public health advice. Neither BOMA Canada nor the individuals presenting herein are providing such advice.**



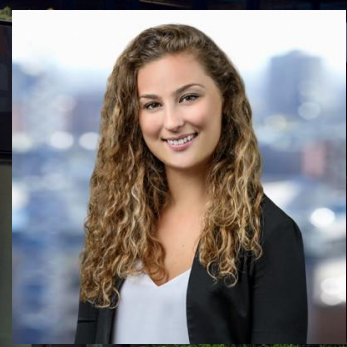
# Back to Work Guide



Download the Guide at  
[bomacanada.ca/coronavirus](https://bomacanada.ca/coronavirus)



# Welcome from BOMA Canada



**Victoria Papp**  
Manager, Environment Standards  
BOMA Canada





# Meet Our Expert



**Leonie Freeman**  
Chief Executive Officer,  
Property Council New Zealand





Tell us about the lockdown and what is life like in New Zealand today?





# How did the New Zealand landlord community respond to COVID-19?





What is it like to enter a building in New Zealand today?







What do you see  
changing for tenants  
post-COVID-19?





Did your government assist the industry and are there any disconnects with how your government is assisting the industry?





Long term, do you foresee any impact on property values and leasing in New Zealand?





Is the commercial real estate industry doing anything to future-proof their buildings so this doesn't happen again?





# What's next for New Zealand, the CRE industry and COVID-19?





# What's next for the Property Council of New Zealand?





**Question & Answer**  
Please use the Q/A box  
functionality on the webinar





# Final Thoughts





# Follow the conversation



@BOMA\_CAN  
@BOMA\_BEST



BOMA Canada,  
Hazel M. Sutton



BOMA Canada



bomacanada

*Sign up for our mailing list @*

*[www.bomacanada.ca](http://www.bomacanada.ca)*



Download the Guide at  
[bomacanada.ca/coronavirus](https://bomacanada.ca/coronavirus)

